

## Back Bar – Solid Door



GBB-23B-HC



GBB-59B-HC



GBB-69B-HC



GBB-80B-HC



GBB-90B-HC



GBB-95B-HC

## Features & Benefits

### System

- Digital temperature control & monitor
- Hot gas condensate system
- Automatic evaporation & defrost system

### Temperature

- Enhanced Airflow Holds Product Temperature 32°F~41°F (0°C~5°C)

### Components

- 4" heavy duty casters with brakes standard for GBB23B-HC
- Energy-saving LED lighting interior lights with switch can provide
- a bright and clear interior for excellent visibility

### Slight Variations May Exist

### Strong & Durable Cabinet Finish

- Black coated steel finished cabinet for exterior
- Heavy-duty stainless steel finished top
- Stainless or galvanized interior available

### User Friendly Feature

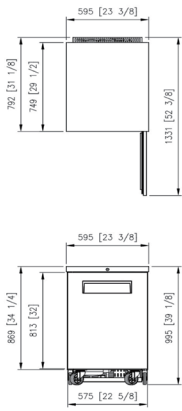
- Door locks standard
- Sturdy and easy-grip handles and doors that open effortlessly
- Magnetic door gasket provides an easy-to-remove feature for cleaning or replacement feature
- Modern shaped glass door for the more excellent product display
- Efficient and economical size for tight workspace

### Options

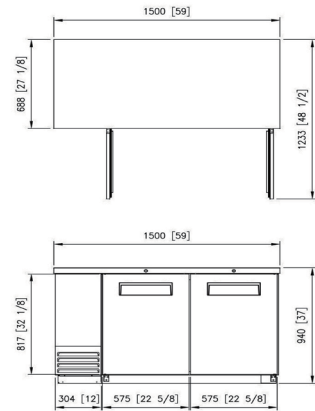
- Standard magnificent black laminated exterior and galvanized steel interior
- Clean and simple looking stainless exterior interior
- 3", 4", or 5" diameter castors available
- Free HCFC & HFC refrigerant model (R-290)

# Plan View

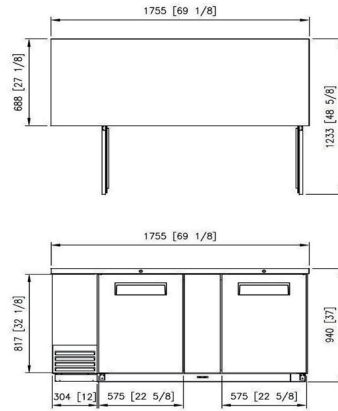
**GBB-23B-HC**



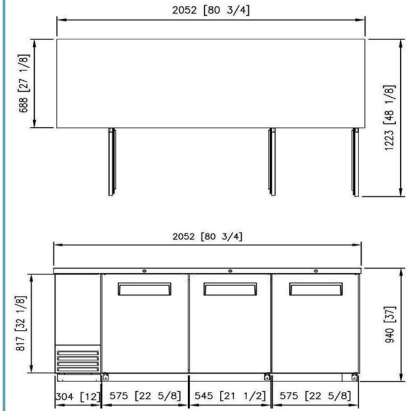
**GBB-59B-HC**



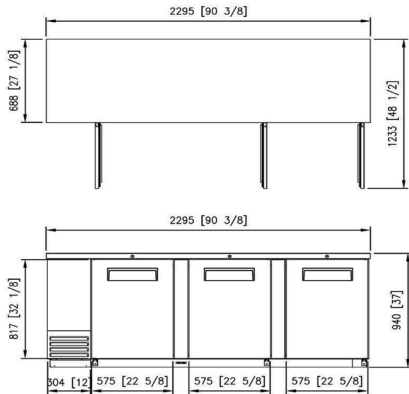
**GBB-69B-HC**



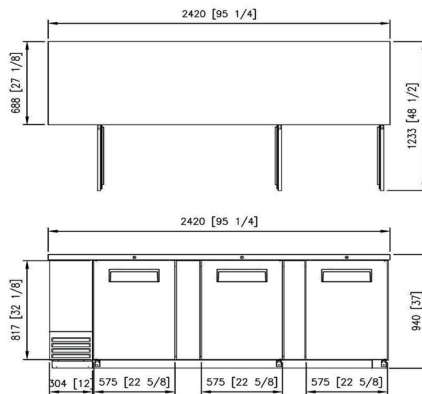
**GBB-80B-HC**



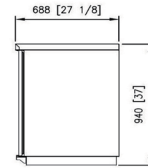
**GBB-90B-HC**



**GBB-95B-HC**



**ALL SIDE**



# Specifications

Model	Capacity			Exterior Dimension (Inch/mm)			Net Weight (lb/kg)	Gross Weight (lb/kg)	Amps	Voltage (V/Hz/Ø)	HP	Refrigerant	No. Shelves	No. Doors
	cu.ft./ℓ	Can	Bottle	W	D	H								
GBB-23B-HC	7.9	386	181	23 3/8	31 1/8	39 1/8	128	134	3.3	115/60/1	1/5	R-290	2	1
	224			595	792	995	58	61	2.0	220/50,60/1				
GBB-59B-HC	19.4	1,084	498	59	27 1/8	37	220	240	4.2	115/60/1	3/8	R-290	4	2
	549			1,500	688	940	100	109	2.8	220/50,60/1				
GBB-69B-HC	23.4	1,299	594	69 1/8	27 1/8	37	251	276	5.2	115/60/1	3/8	R-290	4	2
	663			1,755	688	940	114	125	2.8	220/50,60/1				
GBB-80B-HC	27.9	1,566	714	80 3/4	27 1/8	37	289	315	5.2	115/60/1	3/8	R-290	6	3
	790			2,052	688	940	131	143	2.8	220/50,60/1				
GBB-90B-HC	31.6	1,786	810	90 3/8	27 1/8	37	309	342	6.3	115/60/1	3/8	R-290	6	3
	895			2,295	688	940	140	155	3.4	220/50,60/1				
GBB-95B-HC	33.6	1,875	858	95 1/4	27 1/8	37	324	359	6.3	115/60/1	3/8	R-290	6	3
	951			2,420	688	940	147	163	3.4	220/50,60/1				

\* GBB-23B-HC exterior dimension includes 4" caster height. \*\* GRAND has the right to change specifications without further notice.

\*\*\* Exterior dimensions do not include caster height - Casters are optional



Grand Manufacturing LLC  
www.grandmfgllc.com

